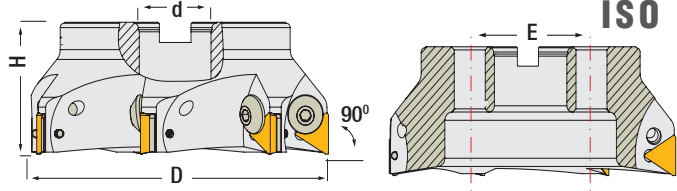
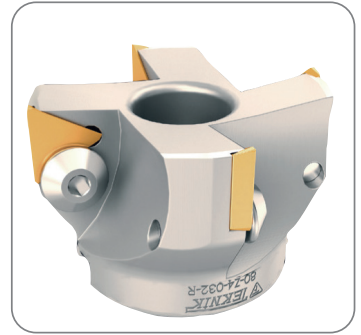


Kod:	TPKN	1603	
Kod:	TPKN	2204	
Ölçü mm	S	L	
TPKN 1603	3.8	12.7	
TPKN 2204	4.76	22	

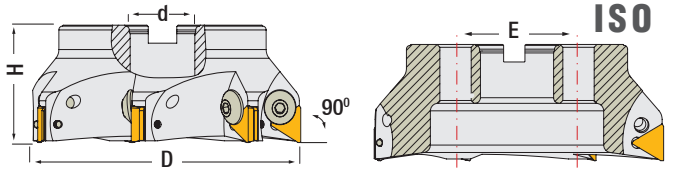


### TPKN 16 / 22 - ALTLIKLI Yüzey Tarama Başlıkları

Sipariş Kodu	D mm	d mm	Z Ağız	H Boy	E mm					Allen
T 100	80	32	Z.5	52	-	TPKN 1603 ISO	TC052 M6 x 17	TA 010	TC 034	4
T 102	100		Z.6							
T 104	80		Z.4							
T 106	100	40	Z.5	62	-	TPKN 2204 ISO	TC054 M8 x 24	TA 012	TC 038 M4 x 10	5
T 108	125		Z.6							
T 110	160		Z.7							
T 112	200	60	Z.8	101.6	-					
T 113	250		Z.9							

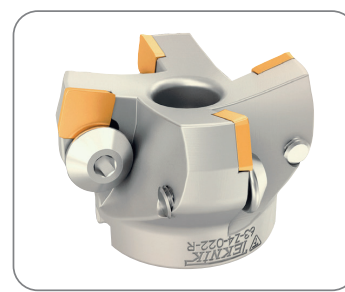


Kod:	TPKN	1603	
Kod:	TPKN	2204	
Ölçü mm	S	L	
TPKN 1603	3.8	12.7	
TPKN 2204	4.76	22	

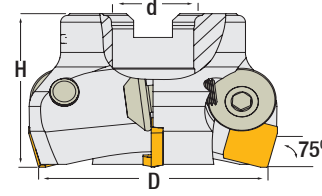


### TPKN 16 / 22 - ALTLIKSIZ Yüzey Tarama Başlıkları

Sipariş Kodu	D mm	d mm	Z Ağız	H Boy	E mm				Allen
T 114	42	16	Z.3	44	-	TPKN 1603 ISO	TC052 M6 x 17		4
T 116	50	22							
T 118	63				Z.4				
T 120	80	32	Z.5	52	-				
T 122	100		Z.6						
T 124	100		Z.3						
T 126	63	22	Z.3	50	-	TPKN 2204 ISO	TC054 M8 x 24		5
T 128	80	32	Z.4	52	-				
T 130	100		Z.5						
T 132	125	40	Z.6	62	-				
T 134	160		Z.7						
T 136	200		Z.8						
T 138	250	60	Z.9	10.6	-				



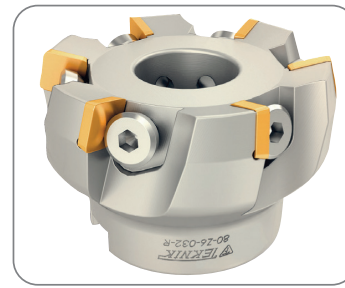
Kod:	SPKN	1203	
Ölçü mm	S	L	
SPKN 1203	3.18	12.7	



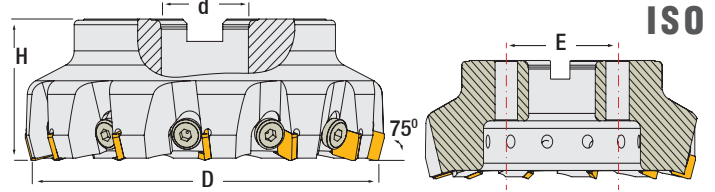
### SPKN 1203 ISO Yüzey Tarama Başlıkları

Kesici Uçlar; İş Parçası ve İşleme Bilgisi ile Ayrıca Temin Edilmektedir. Teklif İsteyiniz.

Sipariş Kodu	D mm	d mm	Z Ağız	H Boy	Ağırlık Kg.				Allen
T 148	50	22	Z.3	45	0.38	SPKN 1203 ISO	TC054 M8x24		5
T 150	63		Z.4		0.60				

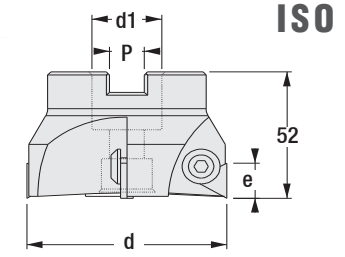


Kod:	SPKN	1203	
Ölçü mm	S	L	
SPKN 1203	3.18	12.7	



### SPKN 1203 Yüzey Tarama Başlıkları

Sipariş Kodu	D mm	d mm	Z Ağız	H Boy	Ağırlık Kg.				Allen
T 152	80	27	Z.6	55	1.260	SPKN 1203 ISO	TC056 Sol M8x24-L		5
T 154	100	32	Z.8		1.698				
T 156	125	40	Z.10	62	3.400				
T 158	160		Z.12		5.012				
T 160	200	60	Z.20	65	6.542				
T 162	300				15.11				



### TPKN 2204 - ALTLIKSIZ Yüzey Tarama Başlıkları

Sipariş Kodu	d mm	d1 mm	p mm	e mm	Ağırlık gr.			Allen
2420 0804	80	32	14.5	22	800	TPKN 2204		Z.4
2420 1005	100				Z.5			

Yedek Baskı Cıvatası	Sipariş	d	Metrik	Allen
	2420 06	40 - 50 - 63	M6 x 0.75	4
	2420 08	80 - 100	M8 x 1	5